



**JOHNSON COUNTY**  
COMMUNITY COLLEGE



**2022**

# REPORT TO OUR COMMUNITY





**CHAIR LEE CROSS  
& VICE CHAIR  
NANCY INGRAM**

# A MESSAGE FROM THE CHAIR

**TRUSTEE LEE CROSS**

Moving forward from the dramatic changes brought on by COVID represents just one area of transformation at Johnson County Community College. Having been recently selected to serve as chair of the Board of Trustees, I have a renewed appreciation for the progress and significant growth that has taken place within our institution this past year.

There is nothing new in the fact that higher education has faced declining enrollment throughout our state. However, we have flattened the curve at JCCC with strong enrollment numbers in the new fiscal year. But even more encouraging is that this past May, our graduation rate was up more than 5% over the previous year. I believe this speaks to the value of our faculty and staff doing exceptional work – every day – to help students succeed personally and academically. Additionally, our Workforce Development & Continuing Education team that is responsible for our noncredit training education experienced an enrollment increase of 28%.

Though we are the largest community college in Kansas and our credit and noncredit enrollment numbers rival our state universities, the value of JCCC is more than headcount. I know that the elected members of the Board of Trustees are united in assuring JCCC provides a quality experience for every person who interacts with us. This collaboration served as the central focus of our robust strategic planning efforts that were recently completed. Structures and committees were specifically formed to foster healthy conversations throughout the process and to build trust while ensuring shared and inclusive voices. The Board looks forward to studying and supporting the creative aspirations, programmatic innovations and transformative policies that will be brought to us as we move to implement strategic action plans.

**I continue to be proud of the steadfast dedication given to JCCC by my fellow board members, faculty, staff and community supporters.**

**Together we advance JCCC's mission to inspire learning to transform lives and strengthen communities.**





# A MESSAGE FROM OUR PRESIDENT

DR. ANDY BOWNE

For more than half a century, the future of Johnson County Community College has remained bright.

Ask a faculty member or a tutor in our Academic Resource Center, there is nothing we do that is more exciting than helping students achieve their goals. Each year we serve more than 40,000 students. It is a personal and professional privilege to be able to meet with our students on a regular basis to hear about the life-changing experiences so many have had while attending JCCC.

The work that we do at JCCC is not possible without community support of scholarships, facilities, and educational programs. We are an affordable and inclusive option for every person in our community – from high school students taking College Now credits that transfer anywhere, to first-generation students seeking helpful resources, to adult students reimagining their careers and to members of our military re-engaging in civilian life. We continue to develop new and important resources and supports for every person who comes through our doors. Our goal throughout the year is to continue to be student-ready.

As I have had the opportunity to meet and interact with so many of you, your feedback has reinforced just how critical it is to forge strong partnerships within our community. It is gratifying that JCCC is viewed as the workforce development engine for our region. We are producing thousands of graduates who earn associate degrees, certificates, or industry-recognized certifications every year. We provide training for businesses looking to enhance the skills of their employees. Our public and private partnerships help move business forward throughout our region.

As a proud Cavalier, this Annual Report is a welcome opportunity to share the innovative and impactful achievements of our faculty, staff and students this past fiscal year.

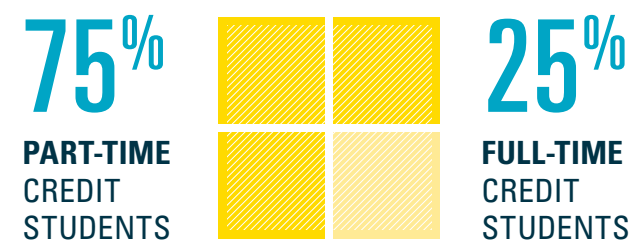
## JCCC BY THE NUMBERS

### STUDENT HEADCOUNT

CREDIT UNDUPLICATED **24,742**

HIGH SCHOOL STUDENT **5,259**

DEVELOPMENTAL COURSES **2,109**



### EMPLOYEE HEADCOUNT

FULL-TIME FACULTY **313**

ADJUNCT FACULTY **441**

FULL-TIME STAFF\* **579**

PART-TIME STAFF\* **771**

CE INSTRUCTORS **107**

Source: JCCC Institutional Research

\* per IPEDS Federal compliance, Counselors and Librarians are included as staff

**101** CREDIT PROGRAMS  
43 two-year degrees  
58 certificates

**16** SELECTIVE ADMISSION PROGRAMS

TOTAL CREDIT HOURS TAUGHT **279,698**





# STUDENT SATISFACTION

WE USE MEASURABLE DATA TO BETTER UNDERSTAND THE SERVICES AND ISSUES THAT ARE IMPORTANT TO OUR STUDENTS.

Each year, JCCC students receive the Student Satisfaction Inventory. This survey is administered by Ruffalo Noel Levitz. The confidential feedback is an important tool used to develop action plans for expanding support services and improving the quality of student life and learning. It also provides a direct comparison to national benchmarks and higher education trends.



	2017	2018	2019	2021	2022
Instructional Effectiveness	5.88	5.85	5.97	6.07	6.14
Registration Effectiveness	5.94	5.98	6.10	6.17	6.23
Safety and Security	5.94	5.67	5.84	6.16	6.15
Academic Services	5.97	6.04	6.20	6.29	6.34
Responsiveness to Diverse Populations	5.92	6.07	6.11	6.18	6.26

JCCC has used the Student Satisfaction Inventory since 2014. Due to COVID, it was not used in 2020. All items are rated using a 1 to 7 Likert scale, with 7 being the highest.



# FIRST RESPONDER TRAINING

JCCC continues to meet the need for First Responders, though COVID brought to light just how vital they are to the safety and well-being of our communities. The College's strong history of training first responders has helped close the gap with growing job vacancies in our metro area.



The **Regional Police Academy** on campus provides the training for all newly hired officers from police agencies within Johnson County. Police Academy faculty instruct three new cohorts per year in a 16-week basic training program. Upon successful completion, officers receive their Kansas Law Enforcement Officer Certification. The Academy also offers special training courses for experienced officers who choose to expand their law enforcement expertise.

Faculty from the **Fire Science Academy** prepare students for fire behavior, firefighter safety techniques and emergency contingency planning through classroom instruction and hands-on firefighting. In two semesters, students complete coursework to earn the Fire Administration Certificate and are eligible to begin their career with a local fire department.

JCCC continues to be recognized nationally for its exceptional **Emergency Medical Science (EMS)** training program. Students can earn the necessary credentials to serve as Emergency Medical Responders, Technicians or Paramedics. Our faculty is made up of seasoned emergency healthcare professionals. These distinguished instructors incorporate scenario simulations into the curriculum to assure students have hands-on learning experiences. Regardless of whether an EMS student pursues a certificate or degree path, they receive the necessary training to have the skills needed to respond to all medical emergencies.



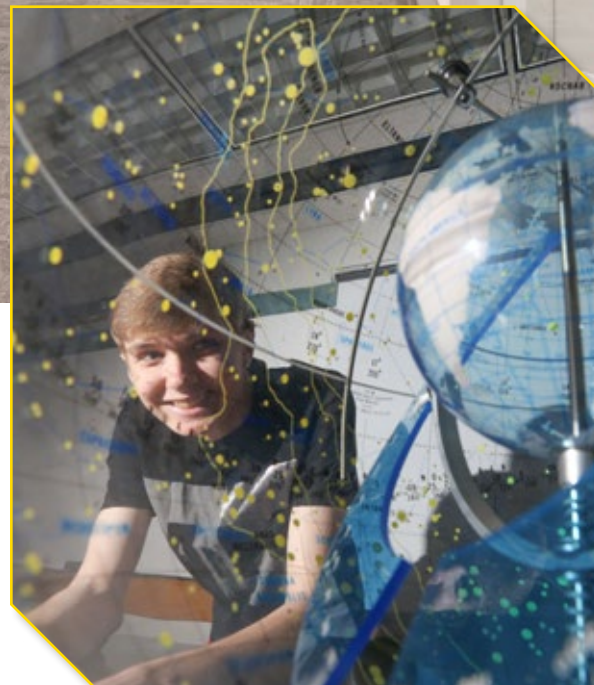


# EXPANDED SCIENCE RESEARCH

With enrollment continuing to grow in our science courses, expanding opportunities for students is an ongoing focus.

An exciting part of the CLB renovation project is the creation of two spaces dedicated to undergraduate research.

For STEM students, research is a critical component of their education. These research centers now allow faculty members to increase the scope and the types of projects that students undertake. Comprehensive research opportunities put JCCC at the forefront of community college education and give our students skills and experience that will serve them well in the workplace or when they transfer to a university setting.

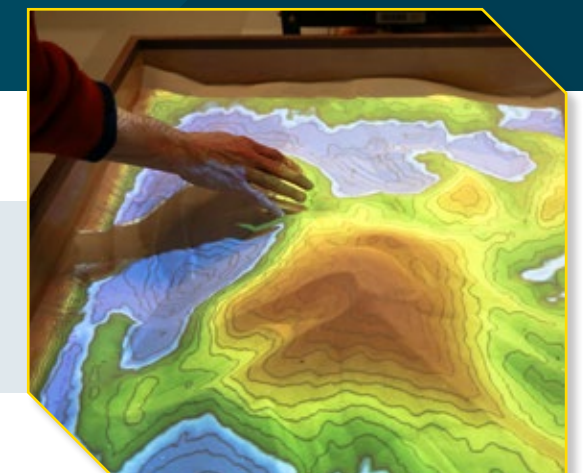


JCCC students present their research in JCCC's annual STEM Poster Symposium. Research areas have ranged from antibiotic resistance to soil pathogens to sheet metal fabrication.

The newly completed renovation project of our Classroom Lab Building (CLB) offers optimized functionality of the labs and classrooms for students and faculty in our Astronomy, Chemistry, Dental Hygiene, Geology, Physics, and Physical Science courses.



**SCAN THE CODE** to explore the presentations from the 2022 STEM Poster Symposium







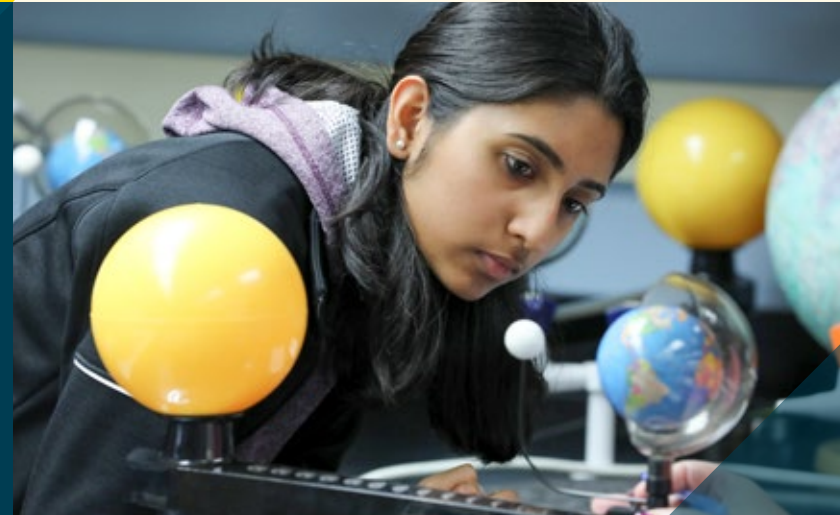
## STEM GRANTS & SCHOLARSHIPS

## MATH PATHWAYS



# \$1.5 MILLION

Near the end of the fiscal year, JCCC was awarded a **\$1.5 million National Science Foundation (NSF) Scholarships in Science, Technology, Engineering, and Mathematics (S-STEM) grant**. The overall goal of the grant project is to increase STEM degree completion and successful transfer of Pell-eligible, high-achieving undergraduates.



The Kansas Board of Regents has created a taskforce to develop **Math Pathways** in colleges and universities throughout the state. Currently, College Algebra is a required course for almost all students, no matter their college major. The Math Pathways initiative will identify different classes that address students' specific needs. While this work has just begun, a likely outcome is a pathway for STEM majors and one for business and health care majors.

The 6-year grant project is titled **"STEM Scholars Program: Achieving Successful Transfer (Self-Efficacy, Independence, Persistence, and Momentum)."** This project will provide scholarships to at least 54 students who are pursuing an Associate of Science degree with plans to transfer to a 4-year college or university. First-year students will receive up to 2 years of scholarship support. The scholarship amounts for JCCC S-STEM students are **\$7,000** or **\$10,000** a year for 2 years to cover the cost of tuition, fees, books, and other expenses.



The Math Department is moving away from high stakes testing for placement into mathematics classes because these tests do not always place students accurately and can be a barrier to student enrollment and success in their math coursework. We implemented a multiple measures approach for placement into College Algebra, which is one of our highest enrollment classes. Now a student's high school GPA and performance in their high school math classes can be used to evaluate their readiness for College Algebra.

Achievement and transfer pathways are available for JCCC S-STEM students who intend to pursue careers such as biological engineer, biomedical engineer, chemical/petroleum engineer, civil or environmental engineer, electrical or mechanical engineer, or industrial systems engineer. Funding from the S-STEM grant is also being used to adapt, pilot, and evaluate pre-transfer activities for JCCC S-STEM students, including one-on-one mentoring, enrichment field trips to area STEM-related research labs and businesses, and transfer planning workshops.

Research by our math faculty about these placement measures is paying off for students. This approach was piloted in our Quick Step Plus program for high school students. The pilot was a success! More than 1,600 students enrolled in this program, which is higher than even our pre-pandemic enrollment numbers. Analysis of their first exam scores shows that students who enrolled with multiple measures are doing just as well as students who took a placement exam.

# 1,600+

STUDENTS ENROLLED IN OUR QUICK STEP PLUS PROGRAM





# STEAM FOR ARTS

JCCC puts the STEAM into STEM with its emphasis on the Arts for credit and noncredit students and the public.

Performances in the Midwest Trust Center include student theatre productions, international professional instrumental and vocal performers and educational lectures and performances for audiences of all ages.



Hands-on experiences are invaluable to students enrolled in graphic design, photography, and film, and the fine arts of ceramics, digital imaging, drawing, painting, metal and silversmithing, and sculpture.



Professor Allison Smith's 20th Century Art History students organized an exhibition and wrote all the wall text for the Nerman Museum's *Zigmunds Priede: Aggregates of Time* installation.

The artist, Zig Priede, has a rich history at JCCC – he was chair of the Fine Arts department and was instrumental in establishing the campus outdoor public art program.



**SCAN THE CODE** to learn about JCCC Fine Arts Professor and Fulbright Research Scholar Laura-Harris Gascogne's "Indian summer" in West Bengal, India.





# CAREER & TECHNICAL PRIORITIES

HUGH L. LIBBY CAREER AND TECHNICAL EDUCATION CENTER



**Certificate and degree training for in-demand, well-paying career programs include:**

- Automation Engineer Technology
- Automotive Technology
- Electrical Technology
- Heating, Ventilation and Air Conditioning Technology
- Plumbing Technology

These represent just a snapshot of the more than 50 Kansas Promise Scholarship-eligible career programs offered at JCCC. We are well into our second year as a Kansas Promise Scholarship awarding institution. The Kansas Promise provides funding for middle-income, Kansas residents who might not qualify for federal and state aid to cover all college expenses.

**50** KANSAS PROMISE SCHOLARSHIP-ELIGIBLE CAREER PROGRAMS OFFERED AT JCCC



SCAN THE CODE TO LEARN MORE ABOUT THE KANSAS PROMISE SCHOLARSHIP.



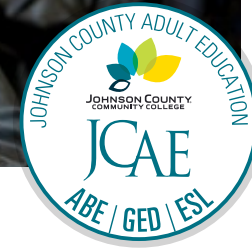
Career and technical instruction for automotive, engineering and electrical technology programs are found in the **Hugh L. Libby Career and Technical Education Center (CTEC)**. With workforce development a high priority throughout the state, course offerings within CTEC allow students to launch a career, gain new skills or advance within their current job.







# WORKFORCE STRENGTH



**Johnson County Adult Education (JCAE)** through JCCC is designed to help individuals 16 and older who are no longer in school. JCAE is manned by staff members and community volunteers – all committed to helping students strengthen their basic reading, writing and math abilities to increase their job skills. The strength of JCAE in helping students land a better paying job, earn a high school diploma, or learn English is reflected in the fact that JCCC continues to maintain the largest adult education program in Kansas.

JCCC's Workforce Development and Continuing Education (WDCE) branch plays a vital role throughout our community as efforts to strengthen our workforce are critical to recovering from the pandemic.



Obtaining capital is usually the most difficult obstacle for small business owners, even without a pandemic. Housing the Kansas Small Business Development Center and the Capital Access Center (CAC) at JCCC is a bonus for achieving the mission of assisting Kansas businesses. The CAC provides free expert loan guidance for business owners seeking capital. Launched just two years ago and initially funded by the CARES Act, the CAC has already proven its value! As one of only three centers in the United States, the CAC has helped 51 companies secure \$39 million in capital infusion and conducted over 150 financial trainings and workshop presentations.



**\$39 MILLION**  
IN CAPITAL INFUSION



## WORKFORCE DEVELOPMENT & CONTINUING EDUCATION

The WDCE team develops and offers contracted training for area businesses and noncredit personal enrichment and workforce training courses for individual students. JCCC has over 16,000 CE students enrolled in more than 3,000 certification, recertification and re-licensure workshops, seminars, computer classes, and contract training events.

**16,000+**

WDCE STUDENTS ENROLLED IN

**3,000+**

CERTIFICATION, RECERTIFICATION AND RELICENSURE WORKSHOPS, SEMINARS, COMPUTER CLASSES, AND CONTRACT TRAINING EVENTS

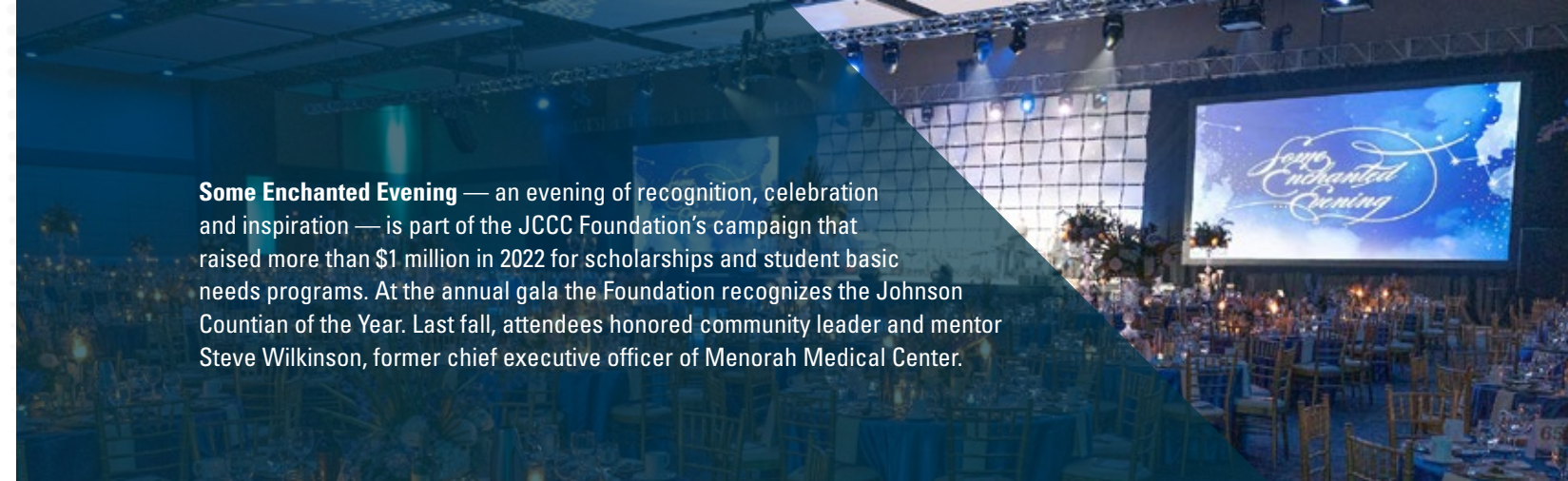






# FOUNDATION SUPPORT

**JCCC FOUNDATION** continues to lead the way on raising private funds to support students and programs across campus. The Foundation is committed to bringing the community and the college together to help support our students and this year, it did just that!



**Some Enchanted Evening** — an evening of recognition, celebration and inspiration — is part of the JCCC Foundation’s campaign that raised more than \$1 million in 2022 for scholarships and student basic needs programs. At the annual gala the Foundation recognizes the Johnson Countian of the Year. Last fall, attendees honored community leader and mentor Steve Wilkinson, former chief executive officer of Menorah Medical Center.



In 2022, nearly \$1.5 million was provided to students for scholarships and direct student assistance including:

- Merit and financial need tuition and textbook scholarships
- Student emergency assistance funds
- Melissa Wells Counseling Center Hardship Grant
- Cavalier MealSHARE program
- International and Immigrant Student Services scholarships
- Veteran and military-affiliated scholarships

## \$1.5 MILLION

IN SCHOLARSHIPS & DIRECT STUDENT ASSISTANCE



Financial assistance from the JCCC Foundation has a tremendous impact on supporting the dreams of our students. **SCAN THE CODE** to hear students tell about the impact scholarships have on them.

### THANK YOU TO SUNDERLAND FOUNDATION!

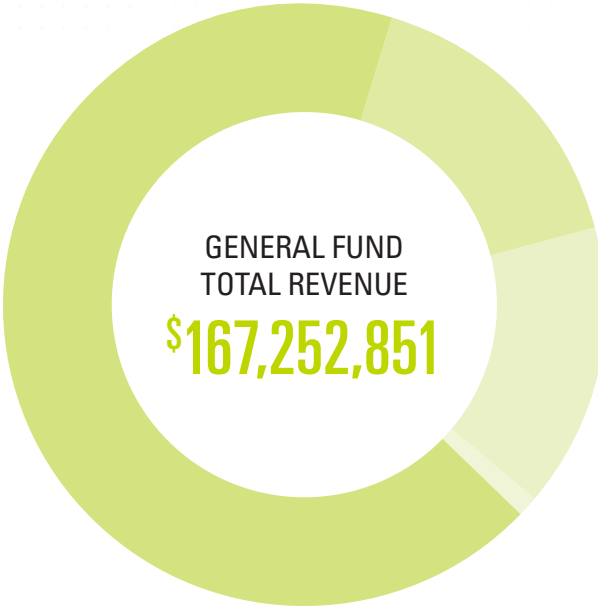
## \$2 MILLION

SUNDERLAND FOUNDATION DONATION

A notable collaboration this upcoming year is a partnership with Continuing Education to raise private funds to support a new commercial driver’s license facility. The Foundation is grateful to the Sunderland Foundation for donating \$2 million to help complete that priority project.



# REVENUES & EXPENSES



Property Taxes	\$112,825,325	67%
Tuition & Fees	\$25,165,274	15%
State Aid	\$24,702,996	15%
Other Income	\$4,559,256	3%
<b>TOTAL REVENUE</b>	<b>\$167,252,851</b>	



Salaries + Benefits	\$113,863,887	71%
Operating	\$23,644,277	15%
Capital	\$18,954,013	12%
Debt Service	\$3,662,344	2%
<b>TOTAL EXPENSES</b>	<b>\$160,124,521</b>	

STATE OF KANSAS \$0.01

SPECIAL DISTRICTS  
(fire, townships, etc.) \$0.03

SPECIAL ASSESSMENTS  
(wastewater, etc.) \$0.03

**JCCC \$0.07**

CITIES  
\$0.17

JOHNSON COUNTY  
(includes libraries,  
parks and rec.)  
\$0.21

UNIFIED  
SCHOOL  
DISTRICTS  
\$0.48



BREAKDOWN OF THE TAX DOLLAR





NONPROFIT ORG.  
U.S. POSTAGE PAID  
Johnson County  
Community College

12345 COLLEGE BLVD  
OVERLAND PARK KS  
66210-1299

## OUR MISSION

JCCC inspires learning to transform lives  
and strengthen communities.

## OUR VISION

JCCC will be an innovative leader in equitable  
student access, learning and success.

**Notice of Nondiscrimination:** JCCC is an equal opportunity, equal access institution and affirmative action employer. JCCC does not discriminate on the basis of sex, race, color, national origin, disability, age, religion, marital status, parental status, military status, veteran status, sexual orientation, gender identity, genetic information or other factors that cannot be lawfully considered in its programs and activities, which includes employment and admissions, as required by all applicable laws and regulations. Inquiries concerning JCCC's compliance with its nondiscrimination policies (including Title IX, Title VI and Section 504 inquiries) may be referred to a Title IX Coordinator (TitleIX@jccc.edu), or Director of Human Resources, or the Dean of Students and Learner Engagement, JCCC, 12345 College Blvd, Overland Park, KS 66210, 913-469-8500; or to Office for Civil Rights, Kansas City Office, U.S. Department of Education, One Petticoat Lane, 1010 Walnut Street, Suite 320, Kansas City, MO 64106, 816-268-0550, Fax: 816-268-0559, OCR.KansasCity@ed.gov.